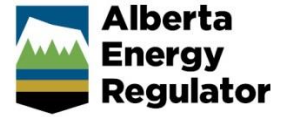


Initiate New Application – Licensing – Technical/Environmental Information



» Intended User: Pipeline Applicants

Overview

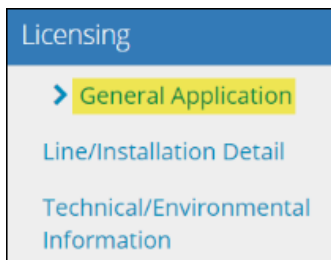
Applicants are required to enter technical consideration, environmental requirements and emergency response planning for each **Activity ID** created by the **Application Type** and **Application Purpose** entered in the **Activity Details**.

This quick reference guide outlines how an applicant enters data in **Licensing > Technical/Environmental Information**. This guide assumes the following:

1. You have a valid account in OneStop.
2. Your account permissions allow complete view access.
3. You have logged in.
4. The applicant is displayed in the Login Information under your company or “Acting as” delegate.
5. You have started an application and completed the **General** section.
6. An application type was entered in the Pipeline Licences table on the **Activity Detail** window.
7. An **Activity ID** was created.

Licensing

When an applicant selects an **Application Type** and **Application Purpose** on the **General > Activity Details** window, licensing windows are generated for each activity in the table and labelled as **Activity ID**. Information for each activity needs to be entered separately.

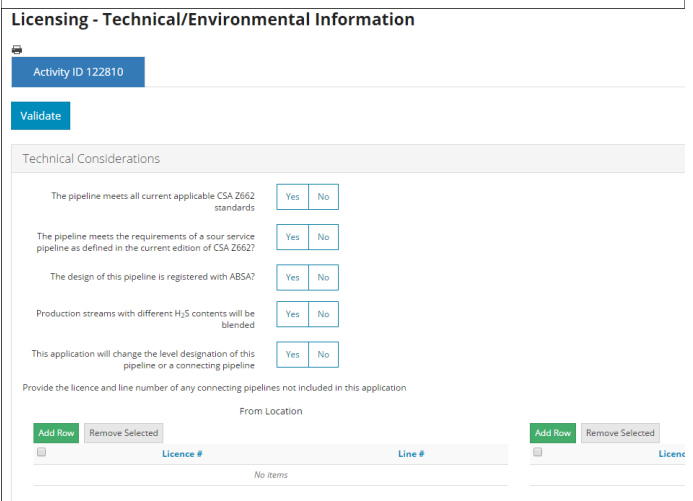


Important: When you answer “No” to any question in the technical considerations, only one **Attach File...** button is displayed.

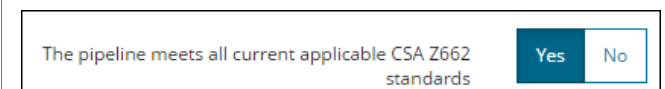
You can only upload one document. When you answer “No” to two or more questions because they don’t meet the requirements, the explanation for questions must be in the same uploaded file.

Licensing – Technical Considerations

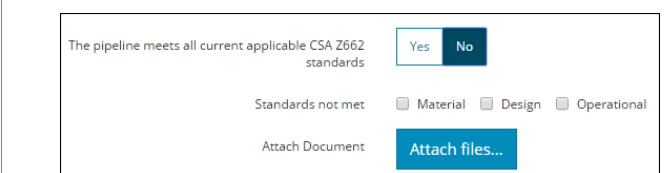
The **Licensing – Technical/Environmental Information** window:



1. Select **Yes** when the pipeline meets CSA Z662 standards.



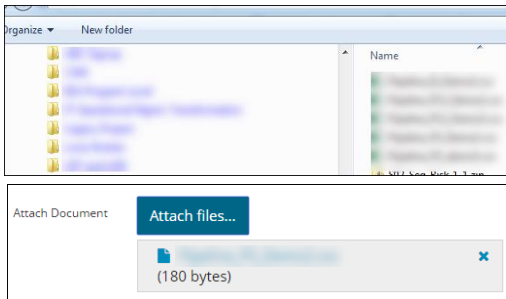
2. Select **No** when the pipeline does **not** meet CSA Z662 standards.



3. Check which standards are not met.

Material
 Design
 Operational

4. Select **Attach File...** to locate and upload the document which outlines what, and why, CSA Z662 standards are not being met.



5. Indicate when the pipeline meets the requirements of a sour-service pipeline as defined in the current edition of CSA Z662.

The pipeline does not have to operate or be maintained to sour-service requirements; it only needs to be designed and constructed.

The pipeline meets the requirements of a sour service pipeline as defined in the current edition of CSA Z662? **Yes** No

6. Indicate when the design of the pipeline is registered with ABSA.

The design of this pipeline is registered with ABSA? **Yes** No

7. Indicate if the production streams with different H₂S contents will be blended.

Production streams with different H₂S contents will be blended **Yes** No

8. Select **No** when the application does not change the level designation of this pipeline or a connecting pipeline.

This application will change the level designation of this pipeline or a connecting pipeline **Yes** No

Select One: Increase

Select **Yes** when the application will change the level designation of this pipeline or a connecting pipeline.

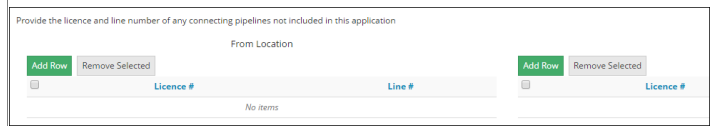
9. Select whether the level will decrease or increase.

--Select--
Decrease
Increase

Connecting Pipelines

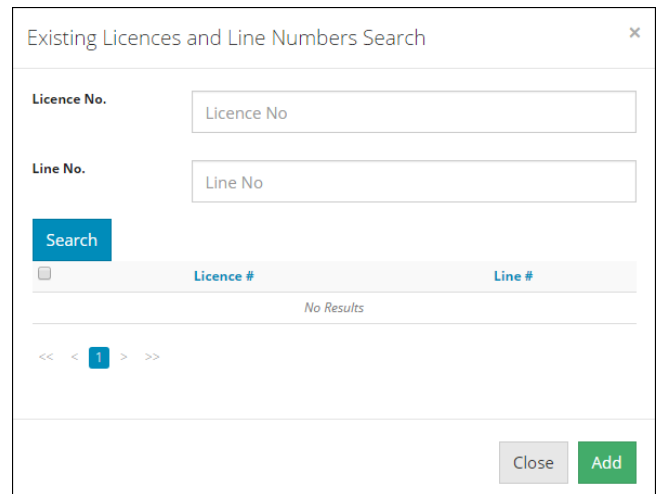
When this application connects to another pipeline not associated to this activity, the licence and line number of the connecting pipeline must be entered.

The Licence and Line Number view:



1. In the **connecting pipelines** section, click the **Add Row** button on either the **From Location** or **To Location**.

2. The **Existing Licences and Line Numbers Search** displays.



3. Enter the Licence No. to complete the search.

Line No. is optional.

Licence No. 26981

Line No. 14

4. Click **Search**.

5. Search results display.

<input type="checkbox"/>	Licence #	Line #
<input type="checkbox"/>	26981	1
<input type="checkbox"/>	26981	2
<input type="checkbox"/>	26981	3
<input type="checkbox"/>	26981	4
<input type="checkbox"/>	26981	5

6. Click the checkbox associated with the row you want to add to the table.

<input checked="" type="checkbox"/>	26981	1
-------------------------------------	-------	---

7. Click **Add**.

8. The licence # displays in the row.

<input type="checkbox"/>	Licence #	Line #
<input type="checkbox"/>	26981	2

9. Click **Save**.

Remove Connecting Pipelines Rows

1. When a row is not required or is selected incorrectly, you can remove the row from the view and OneStop. Click the checkbox at the beginning of the row to be deleted. You can delete more than one row at a time.

<input checked="" type="checkbox"/>	Licence #	Line #
<input checked="" type="checkbox"/>	26981	2
<input checked="" type="checkbox"/>	26981	1

2. Click **Remove Selected**.

3. The row is removed from the window and OneStop.

4. Click **Save**.

Environmental Requirements

The Environmental Requirements segment:

Environmental Requirements

The proposed pipeline/installation is located within the Calgary or Edmonton Transportation/Utility Corridor

1. Select **Yes** when the proposed pipeline/installation is located within the Calgary or Edmonton transportation utility corridor.

2. An additional question displays.

If yes, the pipeline/installation has ministerial consent from Alberta Infrastructure

3. Select **Yes** when ministerial consent has been granted.

4. Click **Save**.

Emergency Response Planning

The emergency response planning segment:

Emergency Response Planning

Maximum calculated emergency planning zone (km)

Number of surface developments in the emergency planning zone

1. Enter the maximum calculated emergency planning zone in kilometres.

2. Enter the number of surface developments in the emergency planning zone.

Emergency Response Planning

Maximum calculated emergency planning zone (km)

Number of surface developments in the emergency planning zone

3. Click **Save**.